

I'm InTouch with PC-Cillin Internet Security 2004

Note: No special settings required when using Central Server Connection in I'm InTouch.

The following directions are for use with Direct Connections in I'm InTouch.

1. Open the Trend Micro Internet Security application.
2. Click Internet Security Status.



3. Click the Personal Firewall link if it is already enabled otherwise click the Firewall button.

The screenshot displays the Trend Micro Internet Security application window. The title bar reads "Trend Micro Internet Security". The main header features the "TREND MICRO Internet Security" logo and the "TREND MICRO" logo. Below the header, there are buttons for "Update Now", "Scan Now", and "Help".

The main content area is titled "Internet Security Status" and includes a "Back" button and a help icon. The status is reported as "Normal".

Current Status: Normal

Last attack information

Last attack date:	2004/02/02 16:18
Source IP address:	192.168.0.33
Destination port:	443
Attack type:	Security rule matched

Setting status

Personal Firewall:	Enabled
URL Filter:	Disabled
Privacy Data Protection:	Enabled
Anti-spam:	Enabled

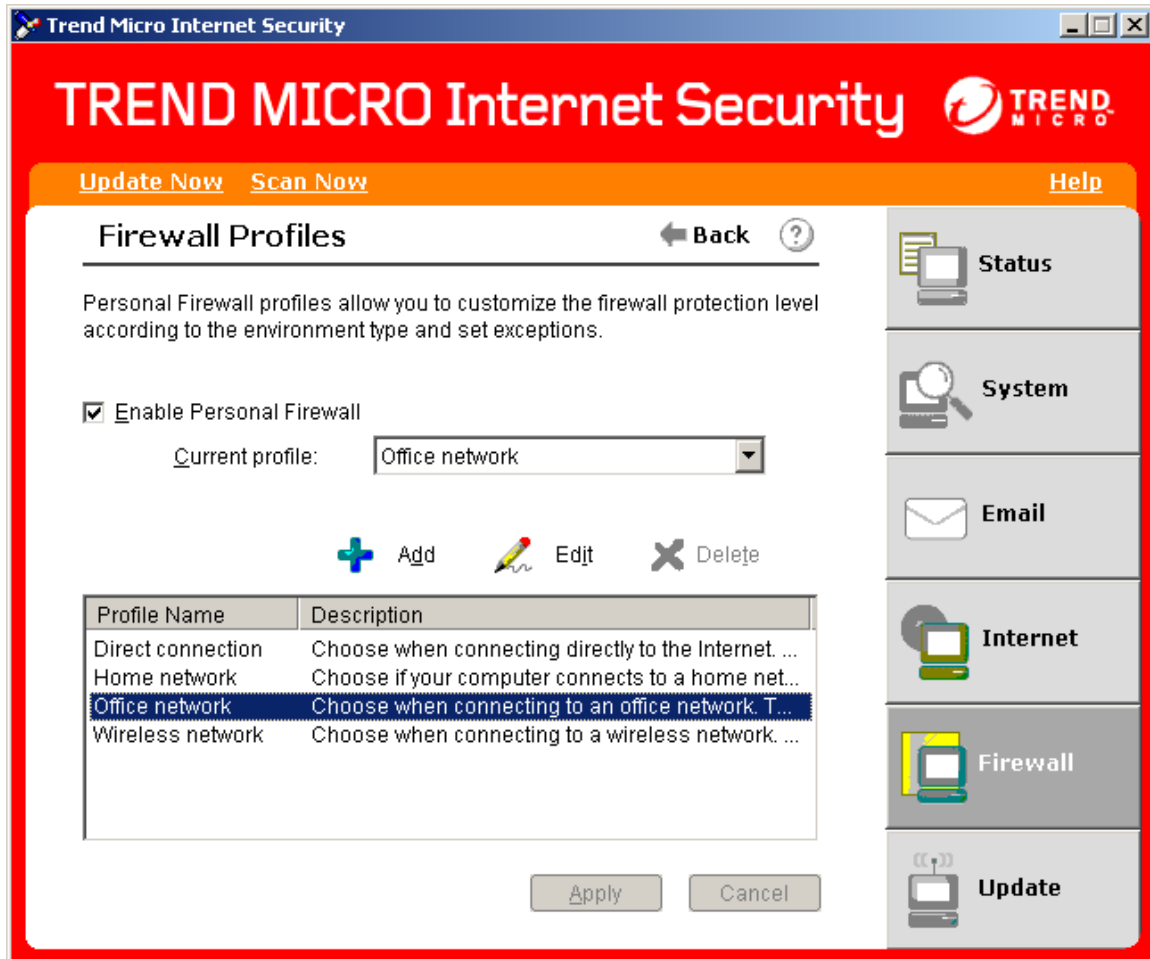
Internet traffic monitor

Received bytes:	107,818
Sent bytes:	592,257

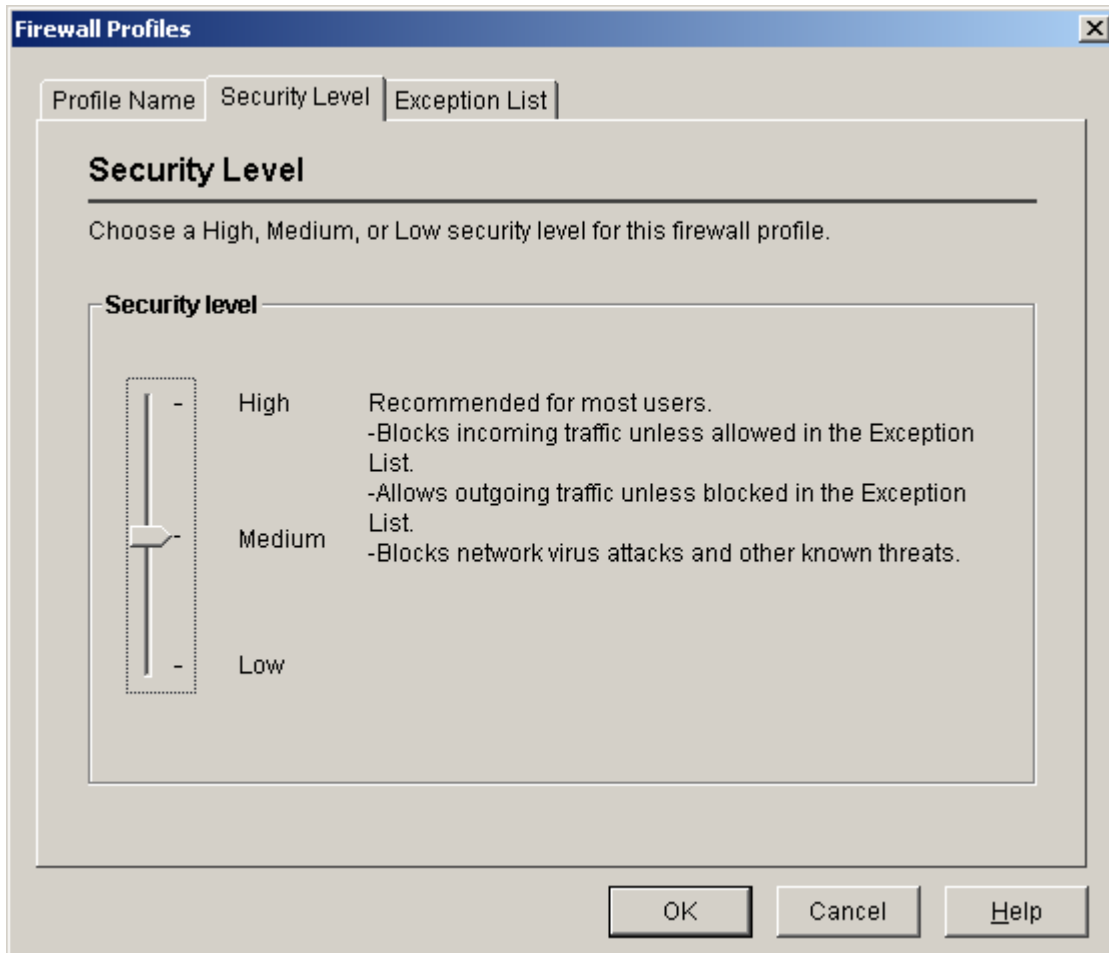
An "Emergency Lock" button is visible next to the traffic monitor section.

A vertical sidebar on the right contains navigation buttons: "Status", "System", "Email", "Internet", "Firewall", and "Update".

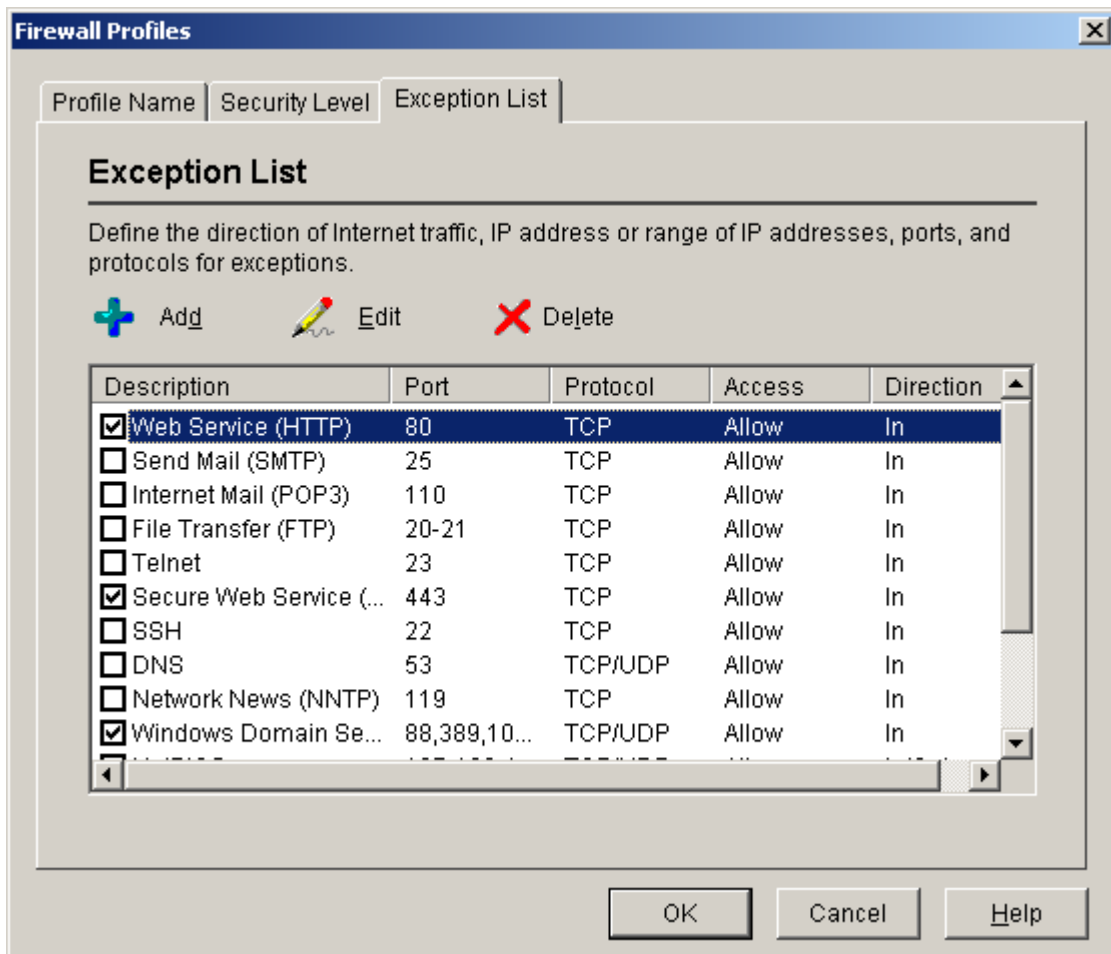
4. Double click the highlighted option (Office Network, if you have Office network selected as Current Profile).



5. Security Level will be set as Medium by default. Just leave it as is.



6. WEB SERVICE and SECURE WEB SERVICE are set unchecked by default. If you are going to use Direct Connection you must check them both.



If you are going to use ports other than 80 and 443, (i.e. 3000 and 3001), you can just modify the 2 entries WEB SERVICE and SECURRE WEB SERVICE. Just type a comma and the port that you want (i.e., 3000).

