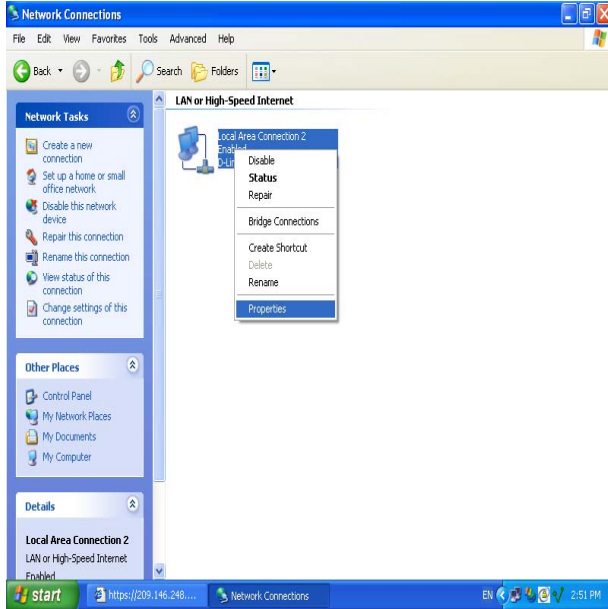
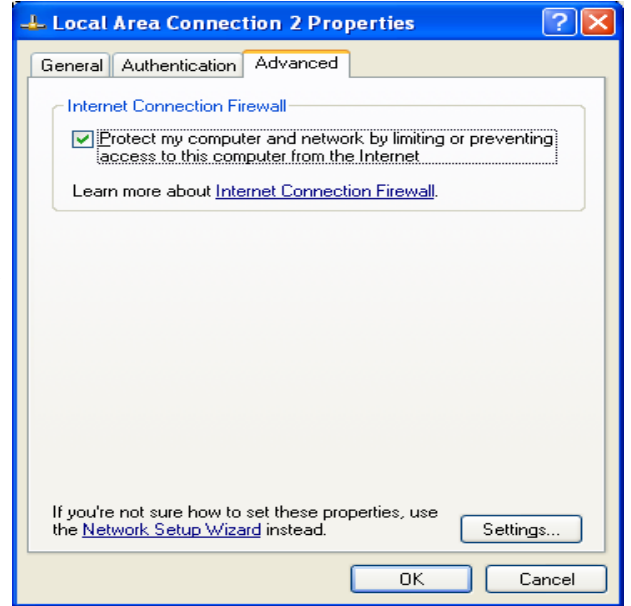


Configuring Windows XP Personal Firewall to work with I'm InTouch using the default ports 80 & 443(SSL)

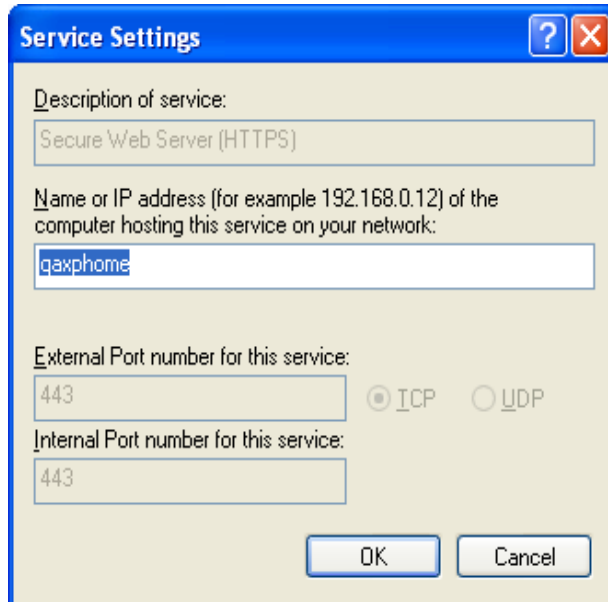
Go to START/CONTROL PANEL/NETWORK CONNECTIONS. Then right click on your Internet connection icon. Then left click on "Properties".



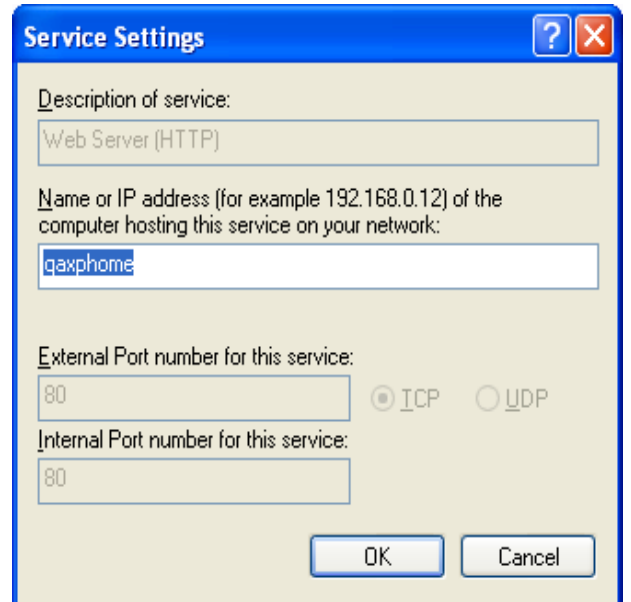
After you click on "Properties" then click on the "Advanced" tab. Then put a check mark in the box for "Protect my computer".



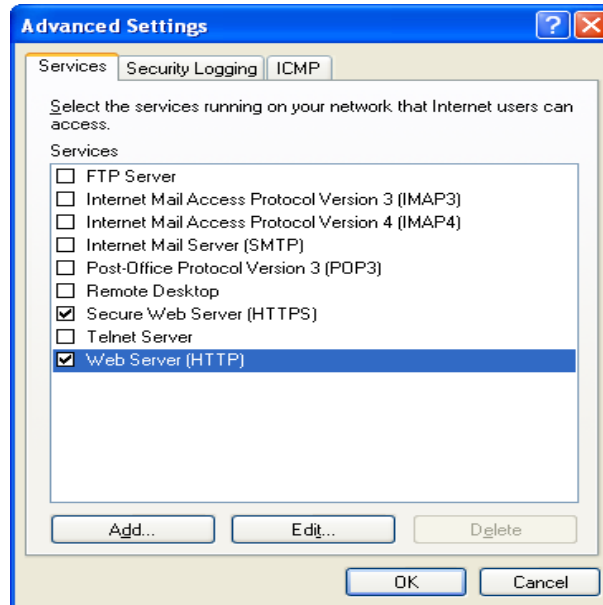
The steps are the same for the HTTPS set up, as they were for HTTP. When you click on the HTTPS box the screen below will appear. Then put in the Windows XP Computer Name or IP Address and click on "OK".



When you click on the default HTTP entry the description is fixed, as well as the External and Internal Port number. You need to add the Windows XP Computer Name or the IP Address of this computer and click on "OK".

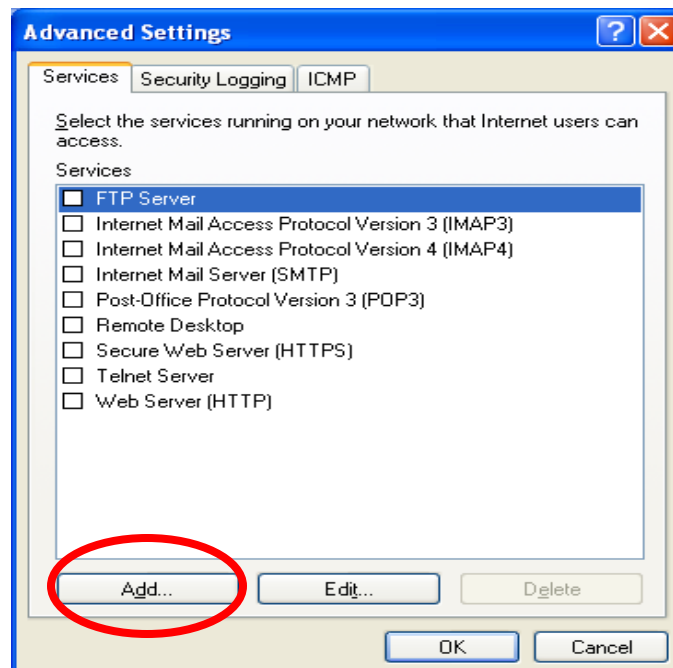


This screen shows the two default entries in the Windows XP Personal Firewall, after completing the above steps.



Configuring Windows XP Personal Firewall to work with I'm InTouch using ports other than 80 & 443

To use ports that are not the default ports click on the "Add" button.



First give a name to the "Description of the service". Then choose the Windows XP Computer Name or IP Address. Then put the port number you wish to use, example 3000 for both the External and Internal Ports. Choose TCP, and click on "OK".

The steps are the same for the https or SSL port connection. Give a name for the "Description of service". Then choose the Windows XP Computer name or IP Address. Then put the port number you wish to use, example 3001 for both the External and Internal Ports. Choose TCP, and click on "OK"

The 'Service Settings' dialog box is shown with the following fields and options:

- Description of service: I'm InTouch (http)
- Name or IP address (for example 192.168.0.12) of the computer hosting this service on your network: 192.168.0.100
- External Port number for this service: 3000
- Protocol: ICP UDP
- Internal Port number for this service: 3000
- Buttons: OK, Cancel

The 'Service Settings' dialog box is shown with the following fields and options:

- Description of service: I'm InTouch (https)
- Name or IP address (for example 192.168.0.12) of the computer hosting this service on your network: 192.168.0.100
- External Port number for this service: 3001
- Protocol: ICP UDP
- Internal Port number for this service: 3001
- Buttons: OK, Cancel

Finally, go to the Advanced Settings Tab. From here you can see the new entries you have created for I'm InTouch in the Windows XP Personal Firewall.

Note:

Make sure you have Im'InTouch configured to the same port numbers that you established in your Windows XP Firewall.

- To confirm or change the port numbers for I'm InTouch, double click on the green satellite in your computer's system tray.
- On the left side of the screen, under I'm InTouch Configuration, click on Web Server
- Once you have set the port numbers, click on APPLY.

The 'Advanced Settings' dialog box is shown with the 'Services' tab selected. The list of services includes:

- FTP Server
- I'm InTouch (http)
- I'm InTouch (https)
- Internet Mail Access Protocol Version 3 (IMAP3)
- Internet Mail Access Protocol Version 4 (IMAP4)
- Internet Mail Server (SMTP)
- Post-Office Protocol Version 3 (POP3)
- Remote Desktop
- Secure Web Server (HTTPS)
- Telnet Server
- Web Server (HTTP)

Buttons at the bottom: Add..., Edit..., Delete, OK, Cancel.