



## DEPLOYMENT OF I'M INTOUCH (IIT) IN TYPICAL NETWORK ENVIRONMENTS

### Introduction

I'm InTouch is a personal remote access application that allows a user to access the data on his or her PC from a remote location, using the Internet. Access is achieved using any computer running a standard web browser or wireless device running a wireless browser. The PC running I'm InTouch acts as a personal data server. This document provides an overview of configuring the I'm InTouch service on computers in typical network environments.

### Basic Requirements

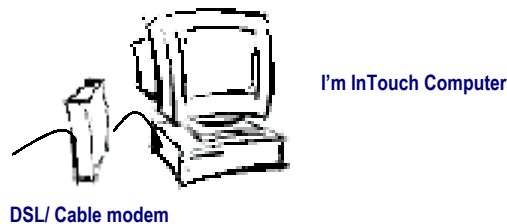
I'm InTouch will run on a number of Microsoft Windows platforms as shown below;

Operating System
Windows XP Home & Professional
Windows 2000
Windows NT4 Workstation
Windows Me
Windows 98(Second Edition)

During the installation of I'm InTouch on a computer, a Secure Sockets Layer (SSL) certificate authored by 01 Communique and an Apache web server will be installed.

### Single Computer running I'm InTouch with a DSL or Cable Modem Internet Connection

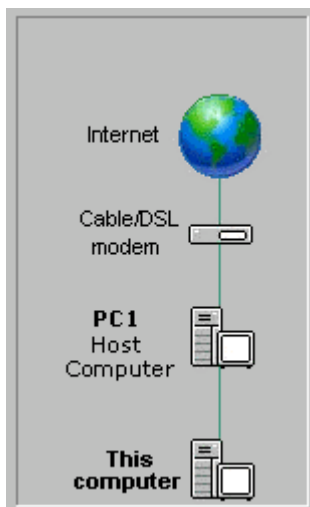
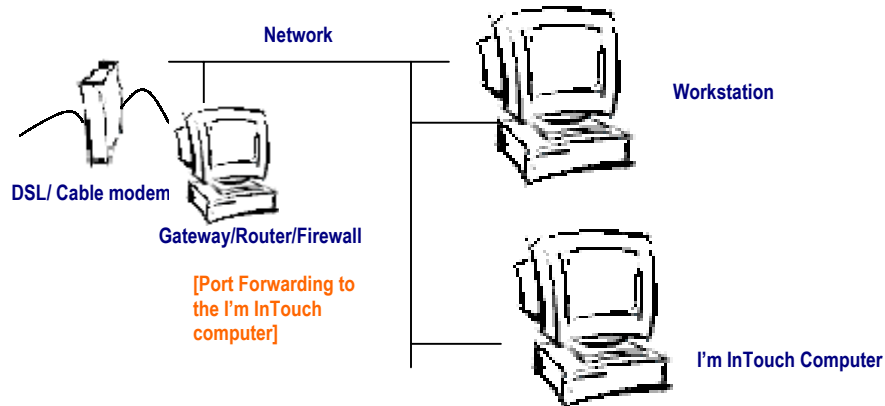
Typical Environment: Home office



I'm InTouch software is installed directly on the computer. If Internet security software, typically referred to as a firewall, is installed on the computer (recommended), configure the software to operate as a Web server on the Internet accepting HTTP and HTTPS requests. Consult the firewall's vendor documentation to determine how to configure the firewall software to support the PC acting as a web server.

## Multiple Computers Sharing an Internet Connection – One Computer running I'm InTouch

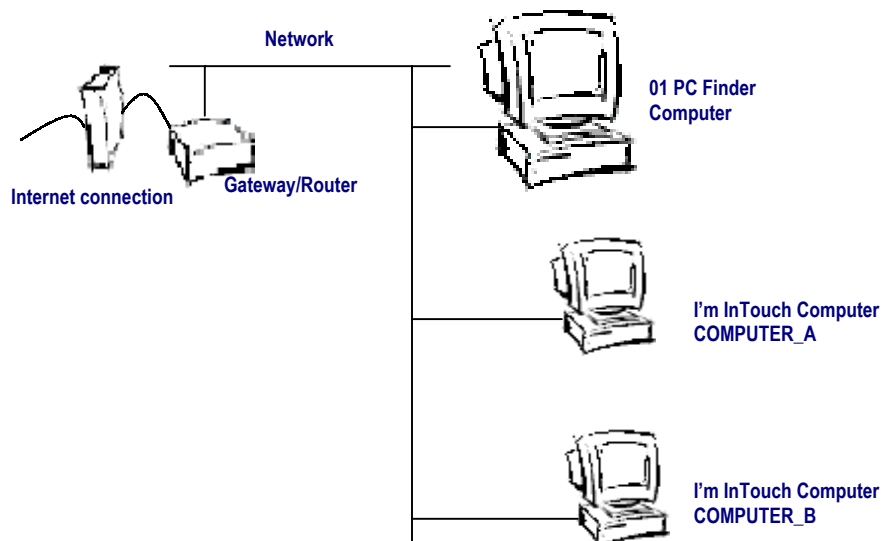
Typical Environment: Home office, Small office



This is a common type of connection for a small office or small home network that provides Internet connection sharing for one or more computers, one of which will be running the I'm InTouch service. Since the gateway machine /router/firewall will secure the network against incoming connections, it must be set up to allow incoming HTTP and HTTPS requests to enter through a port and then be forwarded to the computer running I'm InTouch. A typical Home Gateway (shown as the Host Computer on the left) is a router or a PC with 2 Network Interface Cards (NIC). One NIC is connected to the Cable or DSL Internet service and the other NIC is connected to the Local Area Network (LAN). Consult the router/firewall's vendor documentation to determine how to configure the firewall software to open ports and direct HTTP/HTTPS requests through to the computer running I'm InTouch.

## Multiple Computers Sharing an Internet Connection – Multiple Computer's running I'm InTouch

Typical Environment: Small office



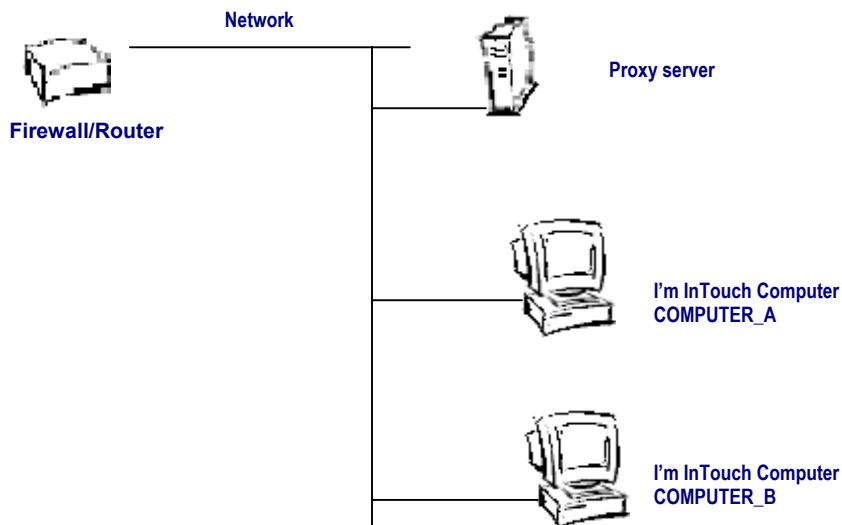
It is possible to operate a number of I'm InTouch computers on the same network by installing the **01 PC Finder** application. This is a web-server based proxy that is able to forward I'm InTouch HTTP/HTTPS connections to other web-servers in the local network. (**01 PC Finder** is a free download from <ftp://01ftp.01com.com/pcfsetup.exe>). In this case the gateway/router must be set up to allow the standard HTTP and HTTPS ports to be routed to the PC Finder computer. It is possible, but not required, to use the same PC for both 01PC Finder and as an I'm InTouch station.

01PC Finder has a simple user interface application that allows the network administrator to identify the other I'm InTouch computers on the network and set them up to be accessible. 01PCFinder is particularly easy to set up for a Windows networking environment. One further advantage of using PC Finder is that the Secure Socket Layer (SSL) certificate can be installed on this machine and it will provide SSL support for all the other I'm InTouch servers in the network.

More details on installing 01 PC Finder can be found at <http://01com.com/docs/pcfquick.pdf>.

## Proxy Server exists in the Local Area Network

Typical Environment: Department within a Corporation

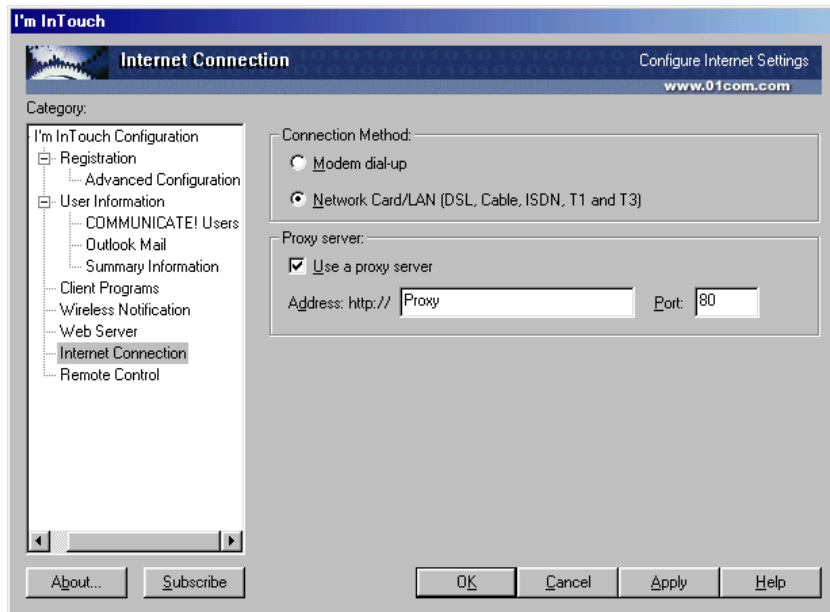


It is possible to operate I'm InTouch PCs within a larger network environment that utilizes a proxy server. Some configuration of the proxy server in the network will be necessary to allow incoming Internet connections (HTTP/HTTPS requests) to reach the respective PCs running I'm InTouch.

The following describes the steps that are needed;

- All I'm InTouch computers must be configured to have outgoing access to the Internet, via one of a) the default gateway or b) a proxy client installed on the I'm InTouch PC or c) by an explicit proxy setting in I'm InTouch. This is very similar to setting up a browser, like Netscape or Internet Explorer.

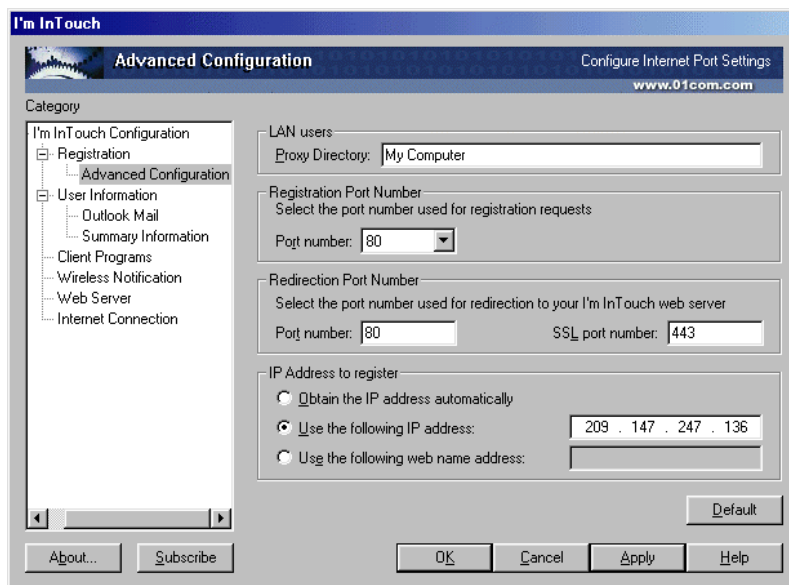
The following screen shows how the outgoing proxy connection is specified:



## Proxy Server exists in the Local Area Network (continued)

- Incoming web server connections (HTTP and/or HTTPS requests) arriving at the Firewall/Router must be forwarded to the Proxy Server. The Proxy Server must be set up to redirect these incoming connections based on a routing address in the URL. E.g. Address "COMPUTER\_A" will result in the forwarding of packets to the internal IP address of I'm InTouch computer A. This requires the network administrator to set this up on the Proxy Server for each I'm InTouch PC and then inform the user of each PC so that the proxy directory can be provided to the I'm InTouch configuration application. For details on how to setup Microsoft Proxy Server refer to [www.01com.com/memberpage/proxy](http://www.01com.com/memberpage/proxy).
- Finally, if the IP address for incoming Internet connections to the Proxy Server is not the same as the external IP address used for outgoing Internet connections, then the administrator must advise the I'm InTouch users which address to use. This situation may arise when there are a number of gateways in the network and more than one external IP address. The users can then set I'm InTouch up explicitly to route incoming connections to the correct Proxy Server.

The following screen shows the I'm InTouch setting for the incoming Proxy Directory and the incoming IP address to register.



### Testing I'm InTouch

Following the installation of I'm InTouch, you can test your ability to connect over the Internet to your I'm InTouch computer. This will provide verification that your configuration has been established correctly for your network environment. Go to <https://locator.01com.com>, (example page below), input your Computer Name that you chose during activation of the service, and if I'm InTouch has been configured correctly, you will receive the Computer Login Page as identified below

01COM

# Connect To My Computer



The service that gives you the flexibility to work wherever and whenever you want

Computer Name:

Connect Using:

Secure your connection with SSL

## What's New In I'm InTouch

### I'm InTouch Messenger

I'm InTouch Messenger allows RIM Blackberry users instant access to their I'm InTouch PC to retrieve messages.

>> [More Details](#) <<

### **New! I'm InTouch v3 - Including Outlook Support and More!**

If you're currently using Microsoft Outlook or Outlook Express as your e-mail client you will be very excited about this latest generation of I'm InTouch.

>> [More Details](#) <<

[Current Version: v3.011 \(Jan 30, 2002\)](#)

